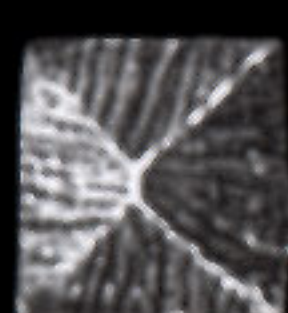




METAL ACCENTS

FLOORGEMS

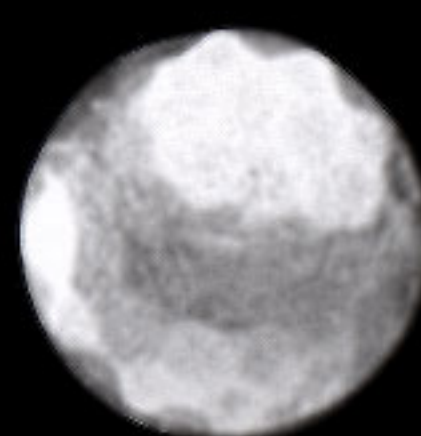
Pewter Floorgems available in finish F107 (mirror) and F105 (satin) only. Floorgems can be applied to walls & floors. They are shown to scale below. When installing floorgems, the post and the actual floorgem base must be pushed firmly into the wet grout. Available in pewter ONLY.



FG01
(0.7 cm)



FG02
(1.2 cm)



FG03
(1.2 cm)



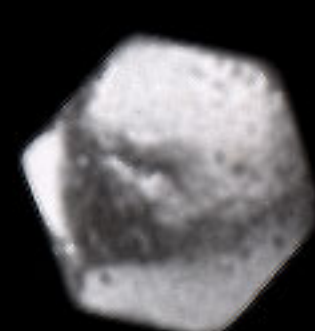
FG04
(1.0 cm)



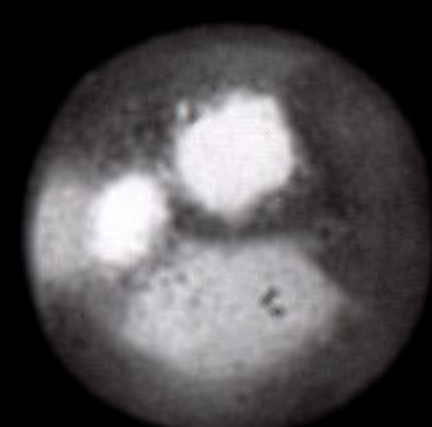
FG05
(1.0 cm)



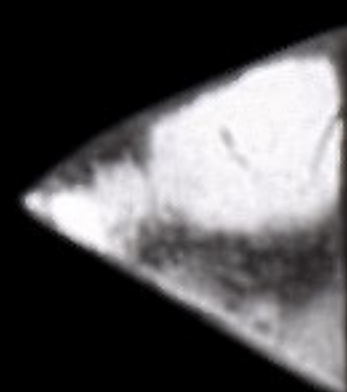
FG06
(0.9 cm)



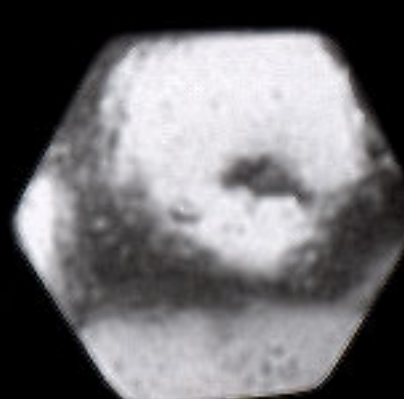
FG07
(0.9 cm)



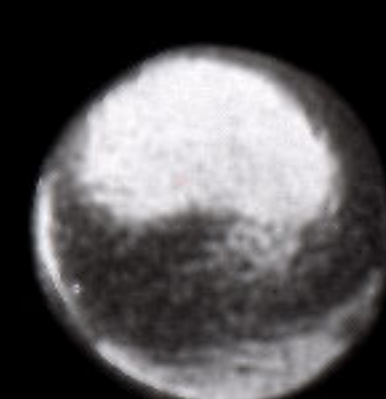
FG08
(1.0 cm)



FG09
(1.0 cm)



FG10
(1.2 cm)



FG11
(1.0 cm)



FG12
(1.5 cm)



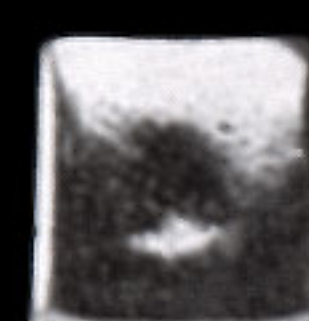
FG13
(0.8 cm)



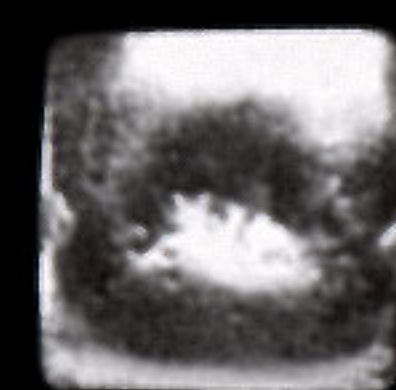
FG14
(1.2 cm)



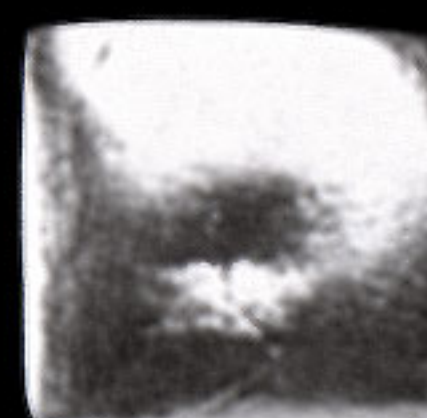
FG15
(0.6 cm)



FG16
(0.8 cm)



FG17
(0.9 cm)



FG18
(1.1 cm)

