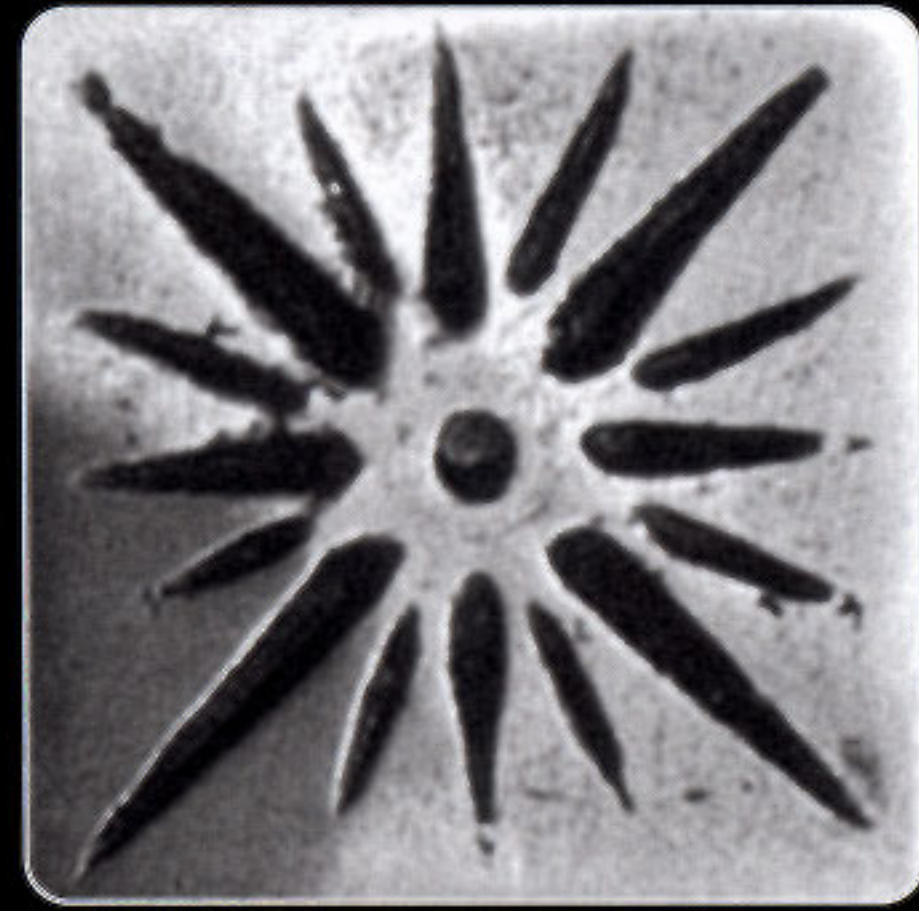


METAL ACCENTS

SOLID PEWTER **1.25"** dots



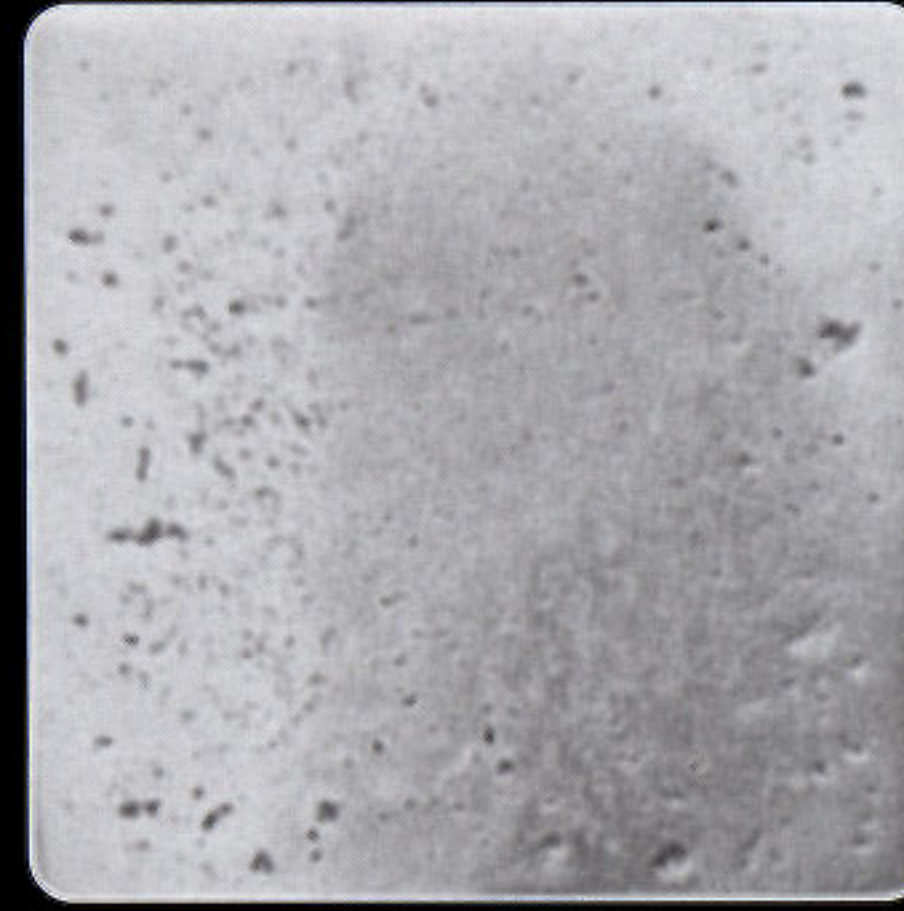
SP01 (w/ back posts)



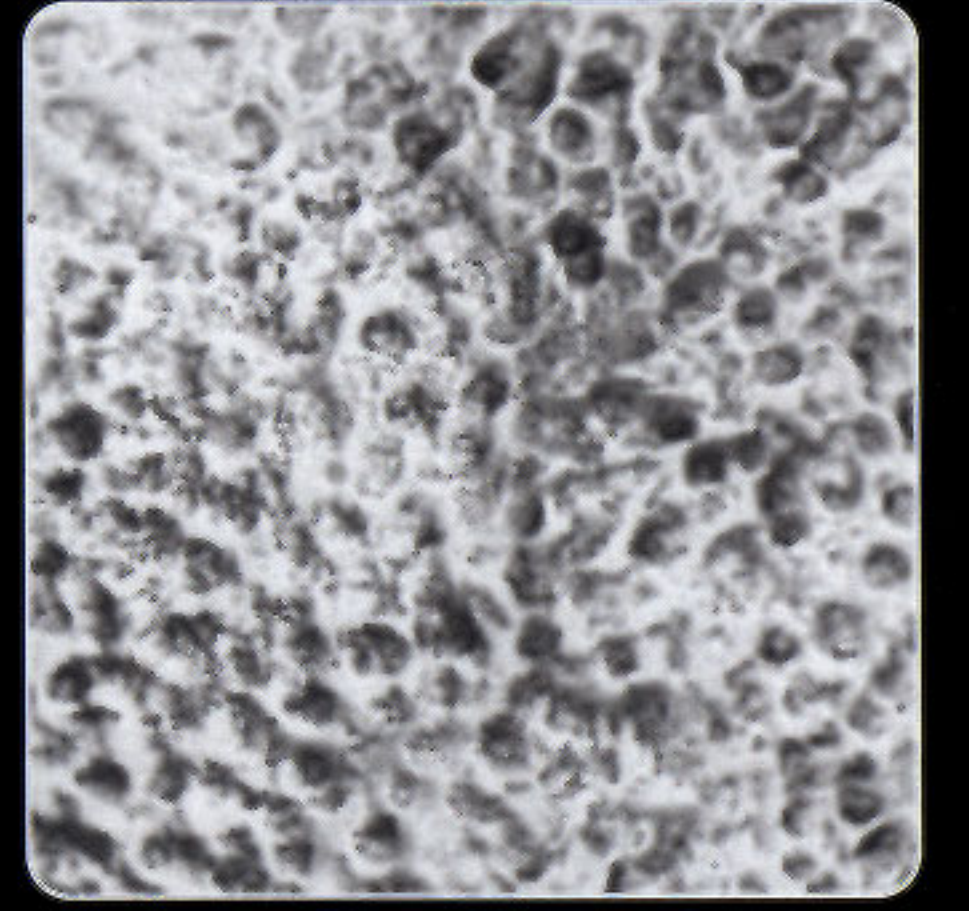
AA06



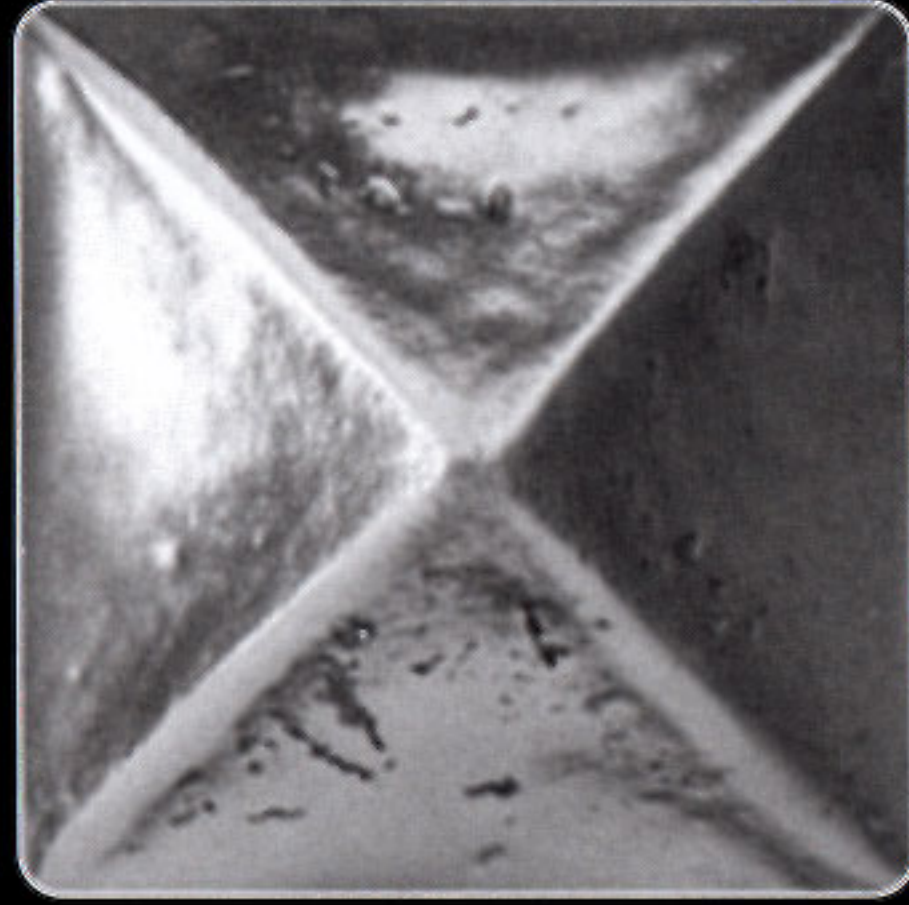
AA07



PL01



TE01



EX01 (1" x .75" h)



AF01



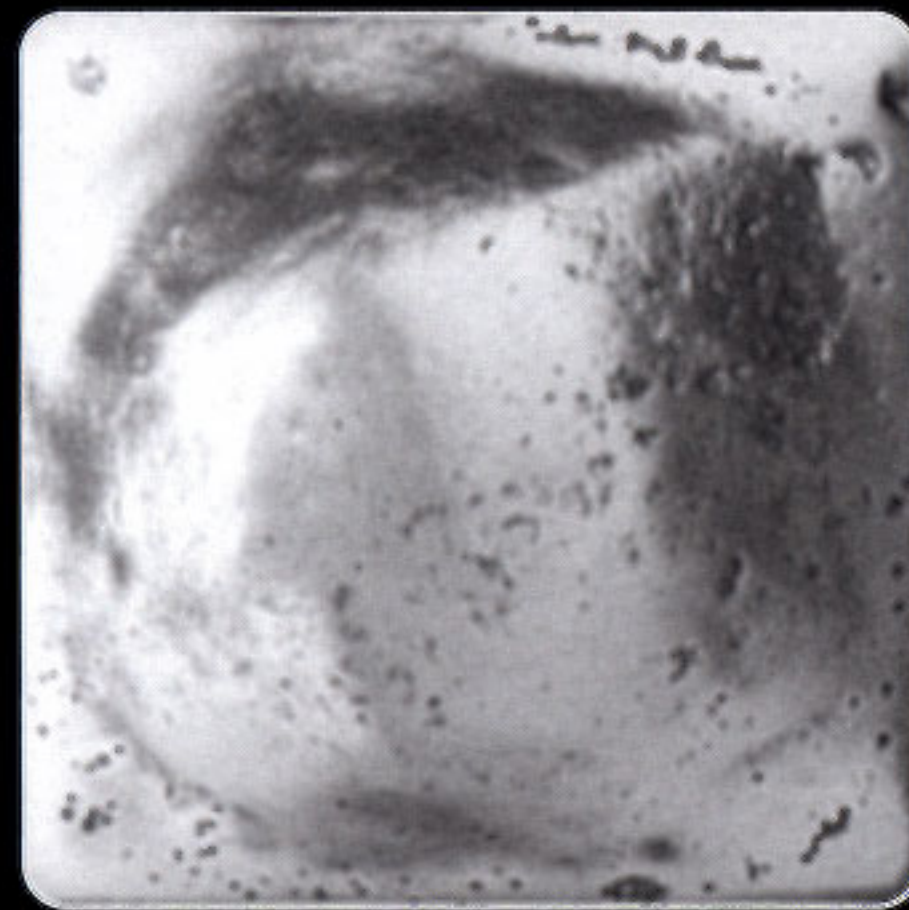
PA17



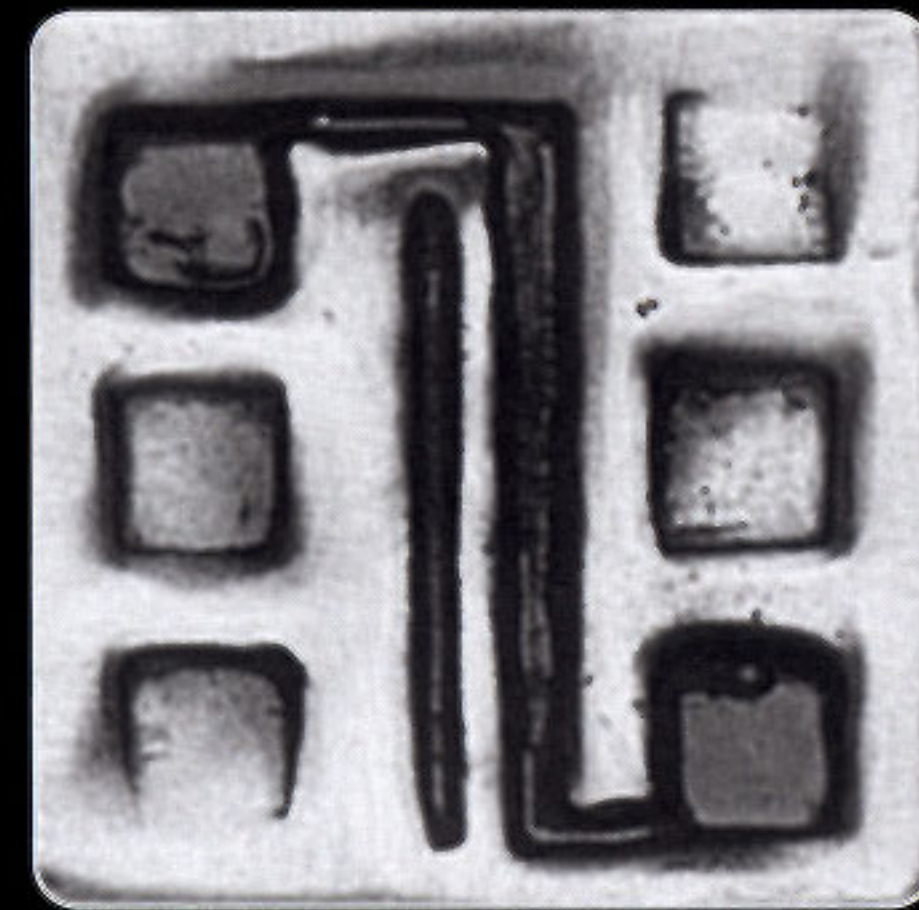
AA08



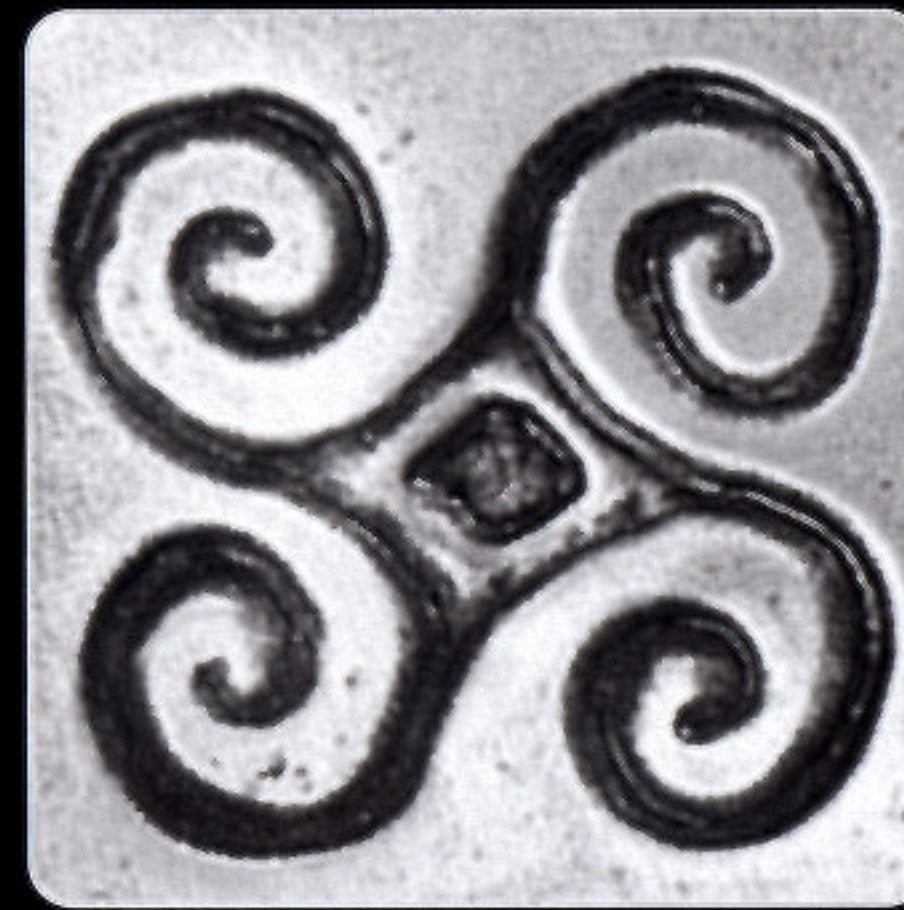
AA09



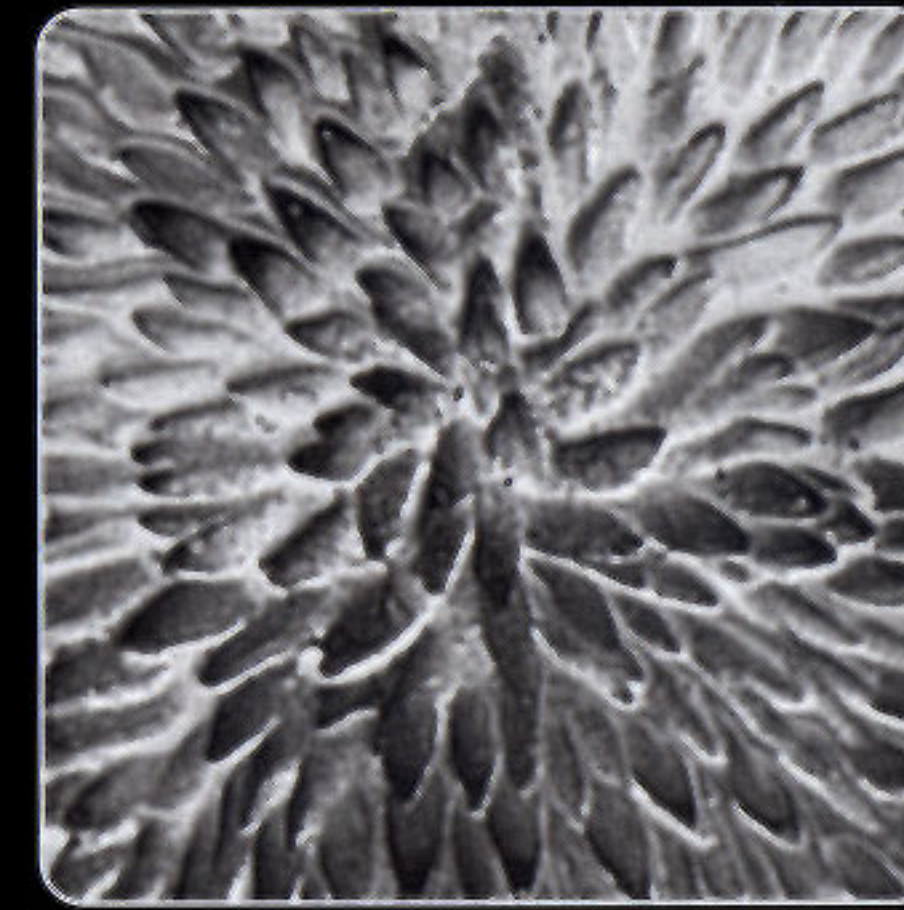
EX02 (1" x .5" h)



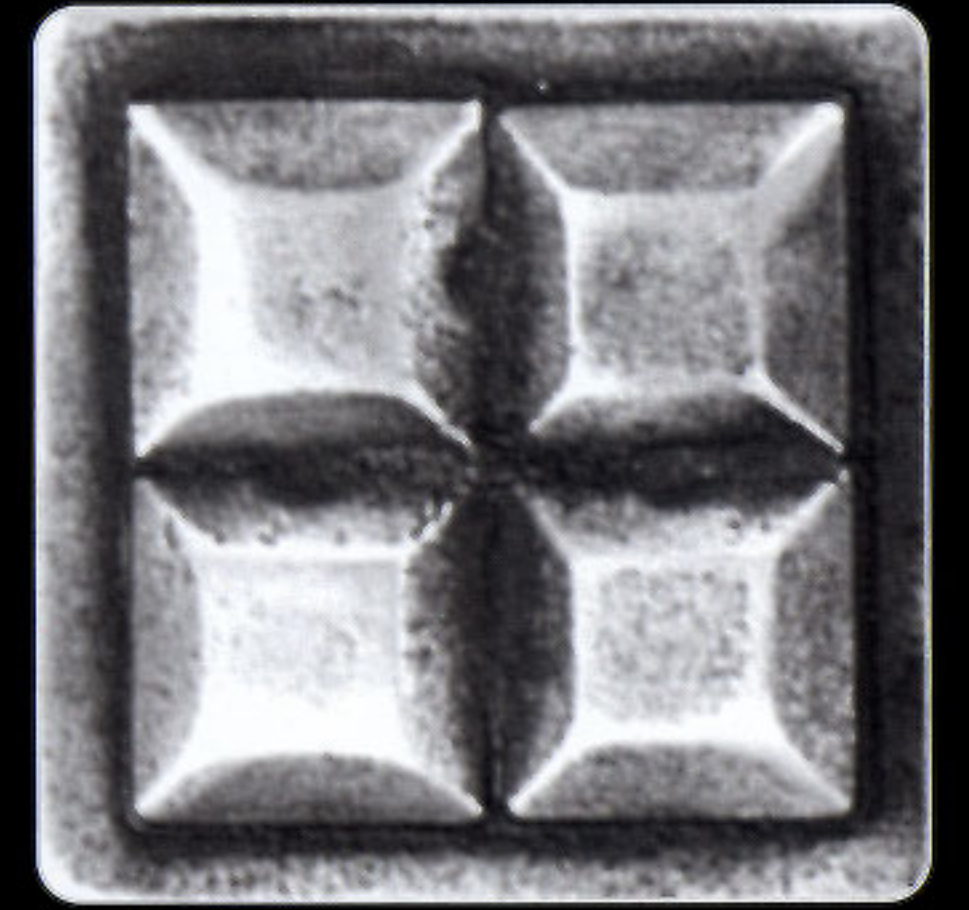
AF02



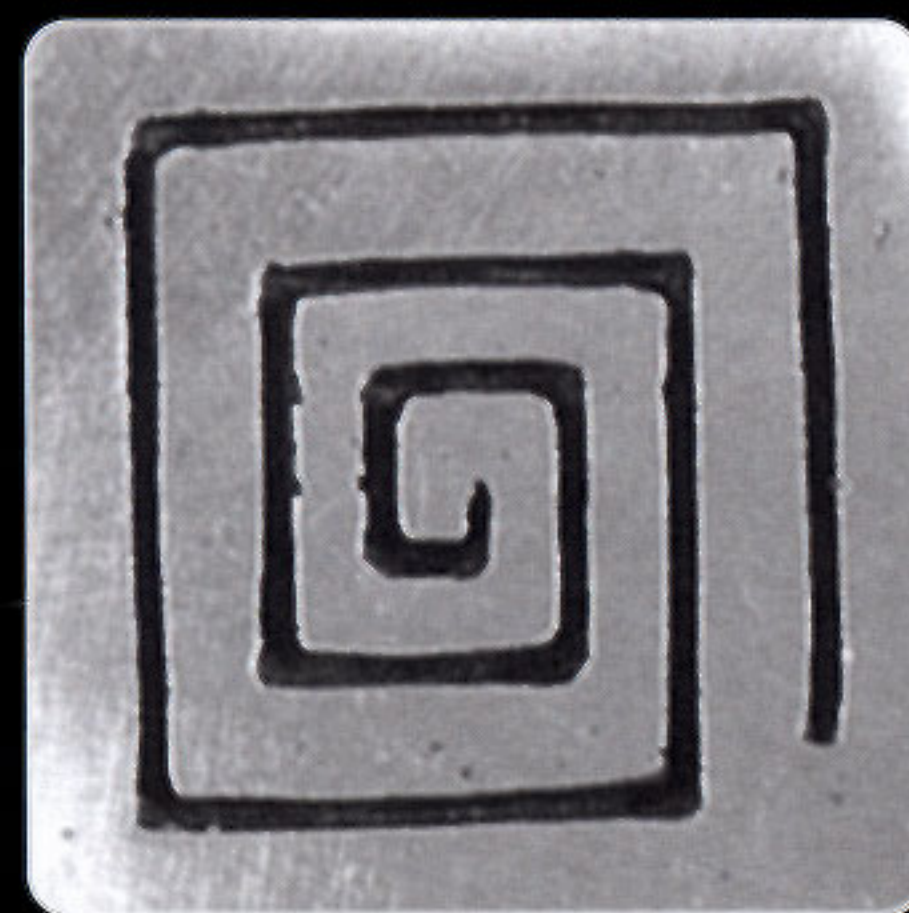
PA18



DE03



PA14



EX03



AF03



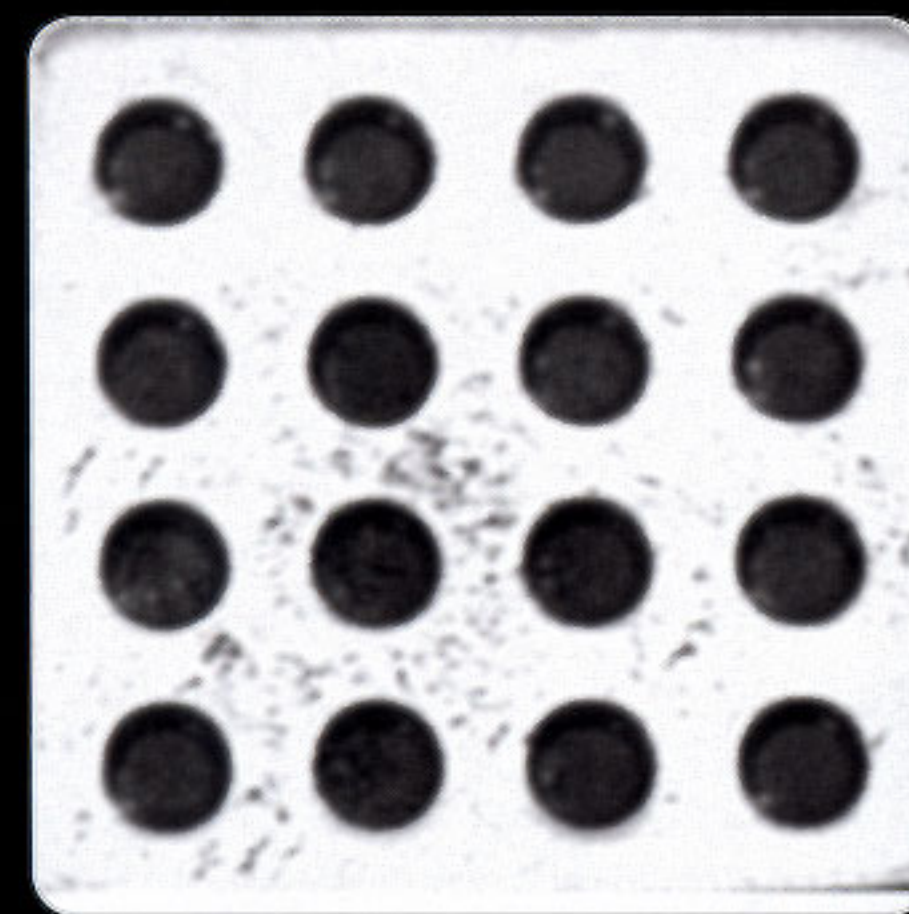
AF04



AF05



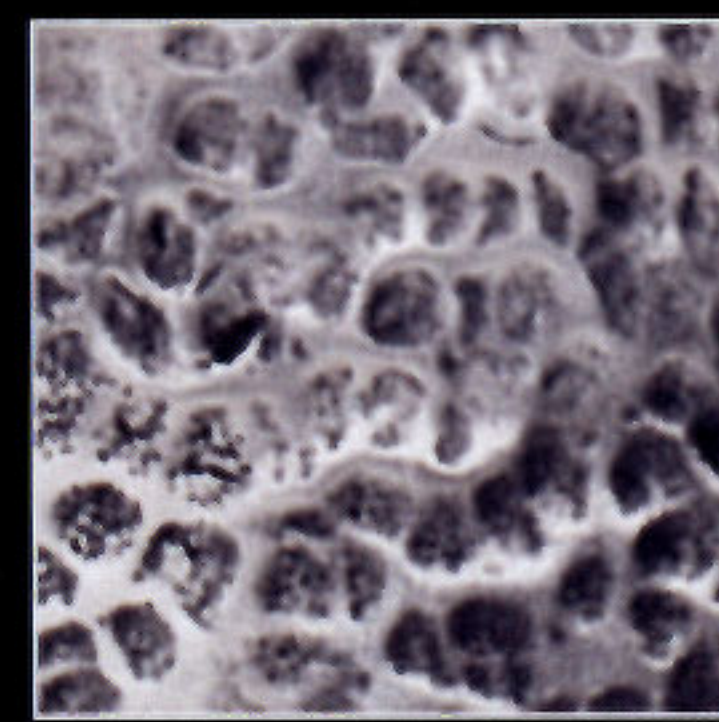
DE21



DE19

STANDARD PEWTER FINISHES (F104 – F107)

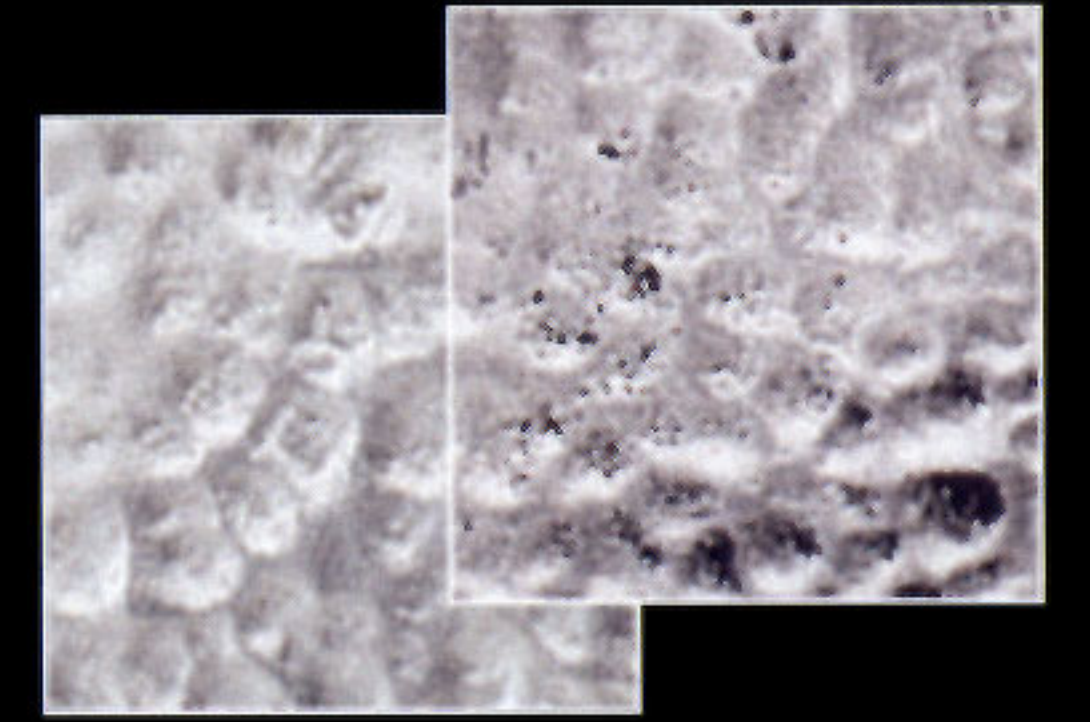
Satin is the standard pewter finish. Mirror and Sanded finishes are also available at no additional cost. Subtle variations in color may occur.



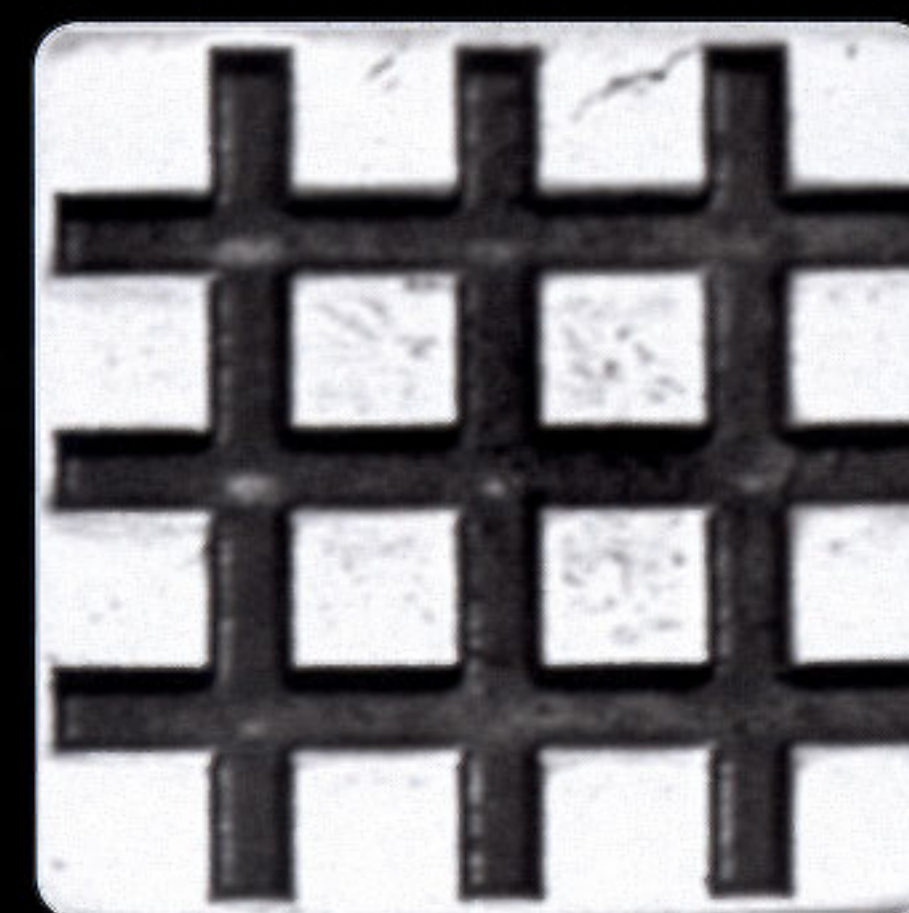
F105
SATIN



F107
MIRROR



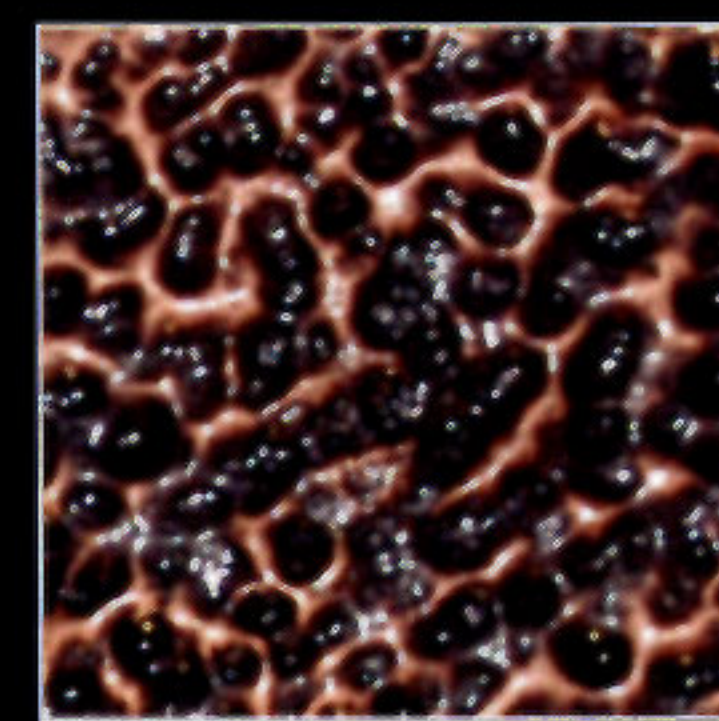
F106
SANDED F104
2 TONE/SANDED



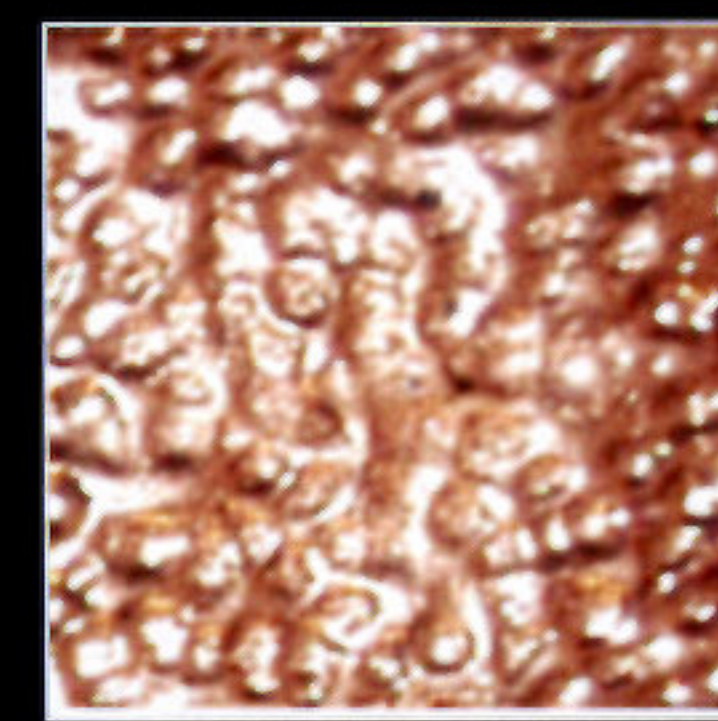
DE20

PLATED PEWTER FINISHES (F108 – F109)

Plated finishes require additional lead time and are an additional cost. They are NOT recommended for floors. Subtle variations in color may occur.



F108
ANTIQUÉ COPPER



F109
BRIGHT COPPER